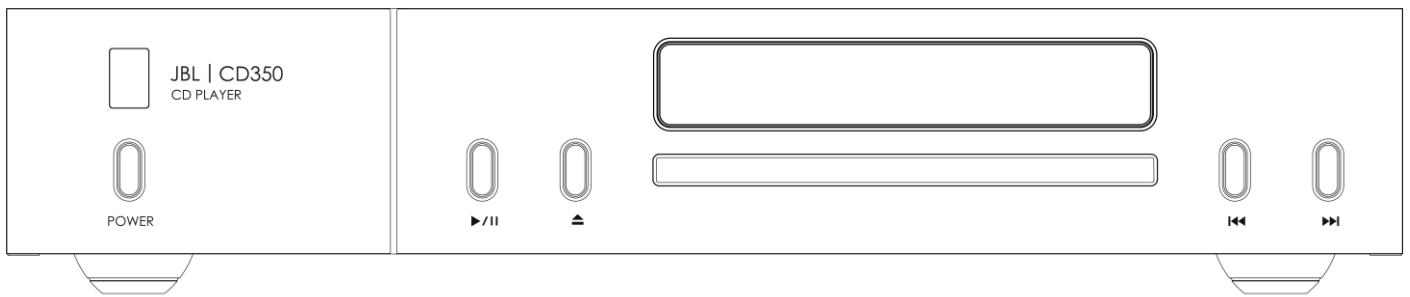




# CD350 Classic - Compact Disc Player

## Owner's Manual



# IMPORTANT SAFETY INSTRUCTIONS

1. Read these instructions.
2. Keep these instructions.
3. Heed all warnings.
4. Follow all instructions.
5. Clean only with a dry cloth.
6. Do not block any ventilation openings. Install this apparatus in accordance with the manufacturer's instructions.
7. Do not install this apparatus near any heat sources such as radiators, heat registers, stoves or other apparatus (including amplifiers) that produce heat.
8. Do not defeat the safety purpose of the polarized or grounding-type plug. A polarized plug has two blades with one wider than the other. A grounding-type plug has two blades and a third grounding prong. The wide blade or the third prong is provided for your safety. If the provided plug does not fit into your outlet, consult an electrician for replacement of the obsolete outlet.
9. Protect the power cord from being walked on or pinched, particularly at plugs, convenience receptacles and the point where they exit from the apparatus.
10. Use only attachments/accessories specified by the manufacturer.



11. Use only with the cart, stand, tripod, bracket, or table specified by the manufacturer or sold with the apparatus. When a cart is used, use caution when moving the cart/apparatus combination to avoid injury from tip-over.
12. Unplug this apparatus during lightning storms or when unused for long periods of time.
13. Refer all servicing to qualified service personnel. Servicing is required when the apparatus has been damaged in any way, such as when the power-supply cord or plug is damaged, liquid has been spilled or objects have fallen into the apparatus, or the apparatus has been exposed to rain or moisture, does not operate normally or has been dropped.
14. To disconnect this apparatus from the AC mains completely, disconnect the power-supply cord plug from the AC receptacle.
15. The mains plug of the power-supply cord shall remain readily operable.
16. This apparatus is intended to be used only with the power supply and/or charging cable provided by the manufacturer.

The following instructions may not apply to waterproof devices. Refer to your device user manual or quick start guide for more waterproof instruction if any.

- Do not use this apparatus near water.
- Do not expose this apparatus to dripping or splashing, and ensure that no objects filled with liquids, such as vases, are placed on the apparatus.

**WARNING:** TO REDUCE THE RISK OF FIRE OR ELECTRIC SHOCK, DO NOT EXPOSE THIS APPARATUS TO RAIN OR MOISTURE.

CAUTION	
RISK OF ELECTRIC SHOCK. DO NOT OPEN.	
	THIS SYMBOL ON THE PRODUCT MEANS THERE IS UNINSULATED, DANGEROUS VOLTAGE WITHIN THE PRODUCT ENCLOSURE THAT MAY PRESENT A RISK OF ELECTRICAL SHOCK.
	THIS SYMBOL ON THE PRODUCT MEANS THERE ARE IMPORTANT OPERATING AND MAINTENANCE INSTRUCTIONS IN THIS GUIDE.

Visit the product page at [JBL.com](http://JBL.com) and download the Safety Sheet for a full list of safety instructions.

## Class II Product

This equipment is a Class II or double insulated electrical appliance. It has been designed in such a way that it does not require a safety connection to electrical earth ("ground" in the U.S.).

# Table of Contents

<b>IMPORTANT SAFETY INSTRUCTIONS</b> .....	<b>2</b>
Class II Product .....	2
<b>TABLE OF CONTENTS</b> .....	<b>3</b>
<b>Thank you for choosing JBL</b> .....	<b>4</b>
<b>Package Contents</b> .....	<b>4</b>
<b>Placing The Unit</b> .....	<b>4</b>
<b>Front Panel</b> .....	<b>5</b>
<b>Rear Panel</b> .....	<b>6</b>
<b>Remote Control</b> .....	<b>7</b>
<b>Connecting the CD player</b> .....	<b>8</b>
Analog Connection .....	8
Top Tips.....	8
<b>Digital Connection</b> .....	<b>9</b>
Top Tips.....	9
<b>OPERATION</b> .....	<b>10</b>
<b>Power</b> .....	<b>10</b>
<b>Standby</b> .....	<b>10</b>
Auto Standby.....	10
<b>Playing a CD</b> .....	<b>10</b>
<b>Playing from a USB storage device</b> .....	<b>10</b>
<b>Menu</b> .....	<b>11</b>
Menu Tree .....	11
<b>Supported Formats</b> .....	<b>11</b>
Disc formats.....	11
File Formats.....	12
<b>Troubleshooting</b> .....	<b>13</b>
<b>Specifications</b> .....	<b>13</b>

## Thank you for choosing JBL

For over 75 years, JBL has been creating best in class audio equipment for concerts, studios, theaters, and homes around the world. JBL is the trusted choice of leading recording artists and sound engineers.

The JBL CD350 is designed to provide you with reliable CD playback for decades to come, all with exceptional musicality so you get the most enjoyment from your music.

This handbook is a guide to installing and using the CD350 and includes information on its more advanced features.

In the unlikely event of any fault, or you require technical assistance, please contact our dedicated support teams by email using [luxurysupport@harman.com](mailto:luxurysupport@harman.com), or by telephone using +44 (0) 1707 668012 or +1 888 6914 171. Or, if you simply require further information about JBL products, our network of dealers will be happy to help you. Further information can also be found on the JBL website at [JBL.com](http://JBL.com).

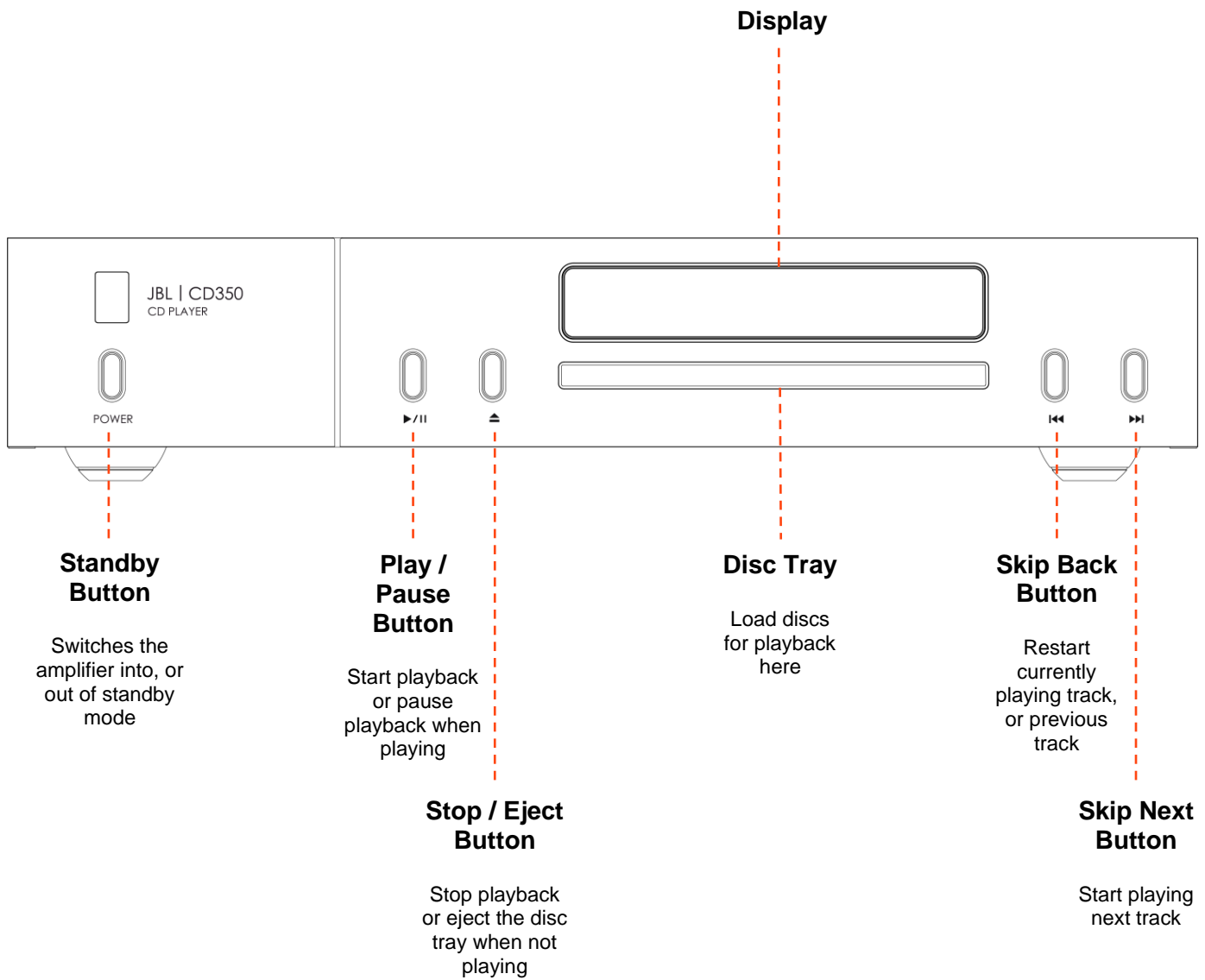
## Package Contents

- JBL CD350 Classic CD player
- IR Remote
- 2x AAA Batteries for the remote control
- Region Specific Power Cords
- Quick Start Guide
- Safety and Compliance Document

## Placing The Unit

- Place the CD player on a level, firm surface, avoiding direct sunlight and sources of heat or damp.
- Do not place the CD350 on top of an amplifier or other source of heat.
- Make sure the remote-control receiver to the left of the front panel display is unobstructed, otherwise this will impair the use of the remote-control.
- Do not place your record deck on top of this unit. Record decks are very sensitive to the noise generated by mains power supplies which will be heard as a background 'hum' if the record deck is too close.
- The normal function of the unit may be disturbed by strong electromagnetic interference. If this occurs, simply reset the unit with the power button, or move the unit to another location.

# Front Panel



# Rear Panel

## Digital Outputs

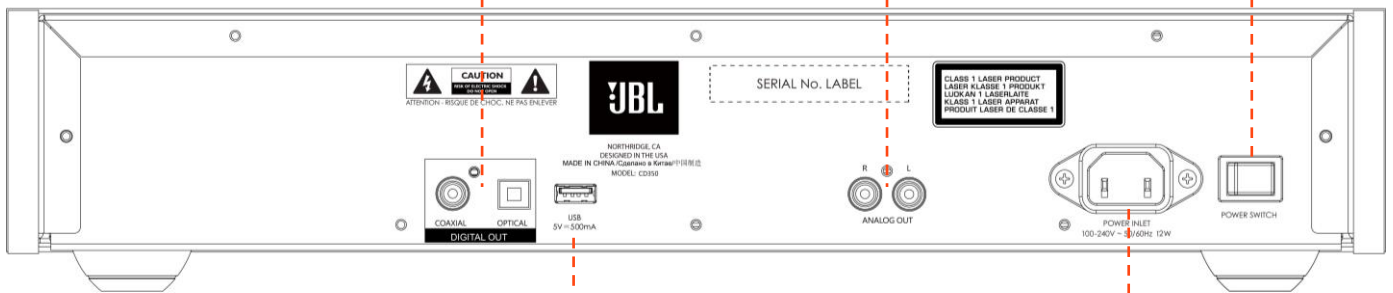
Connect either of these outputs to a digital input on your DAC or amplifier

## Analog Outputs

Connect these outputs to the CD input on your amplifier

## Power Switch

Switch the amplifier on or off



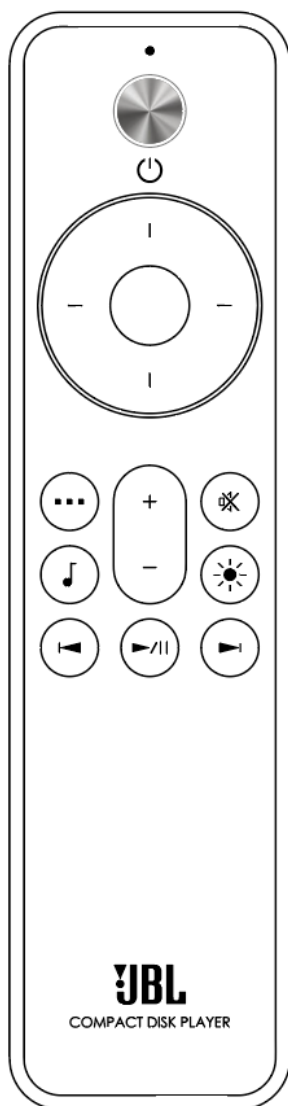
## USB Socket

Connect USB stick for playback of music files

## Power Input

Connect the supplied power cable here

## Remote Control



	Toggle Standby Operation
	Menu Navigation Center button to select or play mode (random/repeat) during playback Left = Play from USB storage Right = Play from CD tray
	Amp Volume Control (JBL SA750 or SA550)
	Amp Mute On or Off (JBL SA750 or SA550)
	Display Brightness
	Transport Keys – Play/Pause (long press to stop), skip back/forward
	Menu button
	Music info button

Note: Incorrect use of batteries can have hazardous results. Do not mix old and new batteries together. Do not use non-identical batteries together. Although they may look similar, different batteries may have different voltages. Ensure the batteries are inserted in the correct direction.

Remove batteries from equipment that is not going to be used for a month or more. When disposing of used batteries, please comply with governmental or local regulations that apply in your country or area.

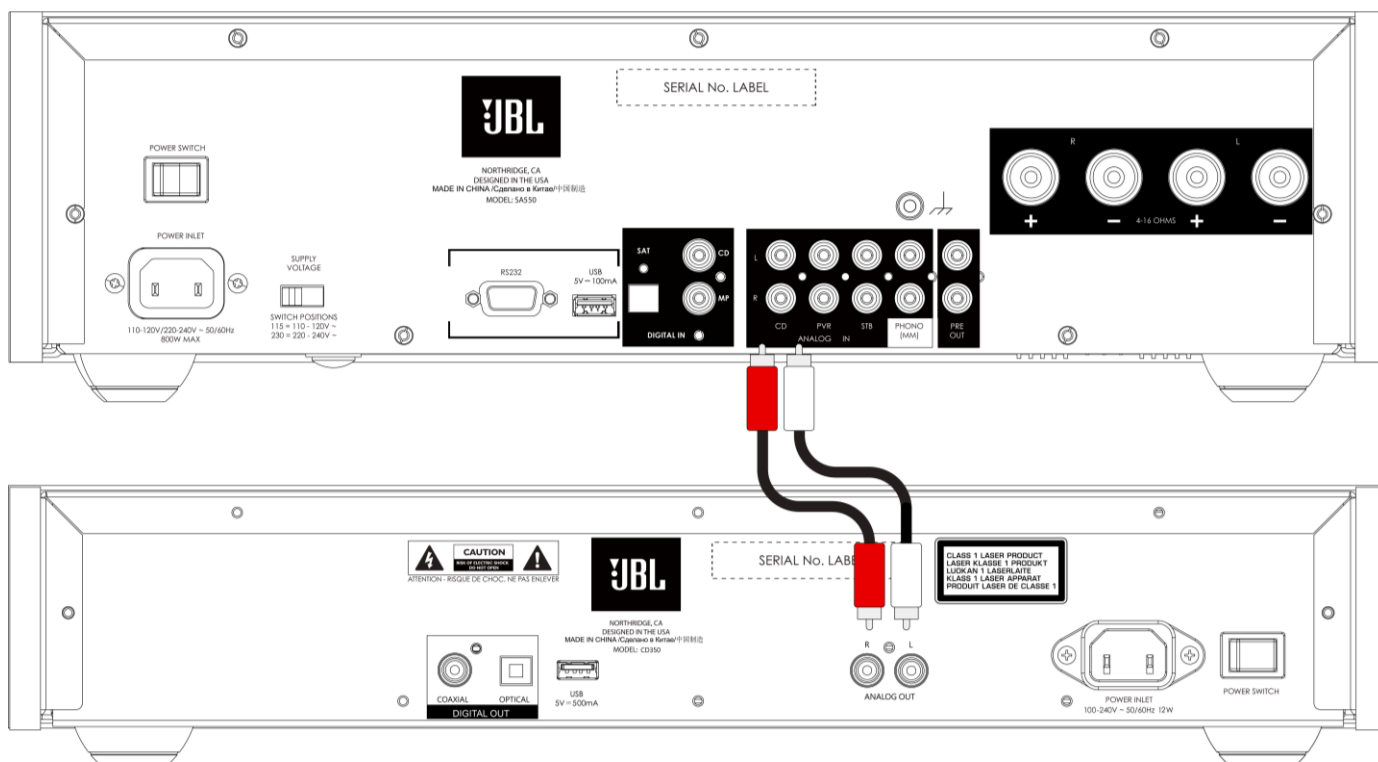
## Connecting the CD player

### Analog Connection

Step 1, ensure power is disconnected from the CD player and amplifier.

Step 2, using analog interconnect cables, connect the right (R), red terminal of the analog output on the CD player to the right (R), usually red terminal of the CD input on your amplifier.

Step 3, connect the left (L), white terminal of the analog output on the CD player to the left (L), usually white terminal of the CD input on your amplifier.



### Top Tips

- After making connections: switch the amplifier on with no input and reduce the volume to minimum. Select the CD input, and then slowly increase the volume to a suitable listening level whilst playing a CD. This technique will avoid loud sounds or product damage in the event of incorrect connection.
- If you are unsure as to how your system should be connected, please contact your JBL dealer who will be happy to help you.

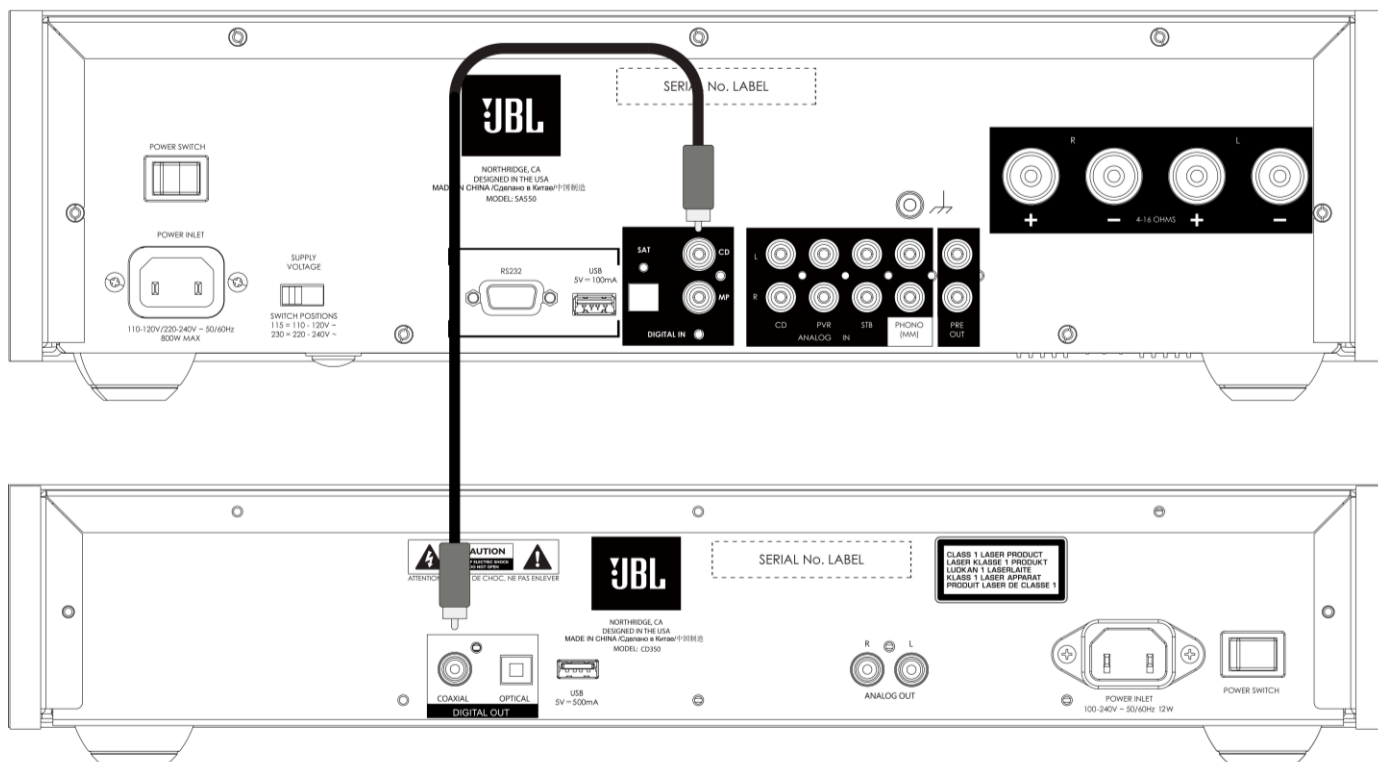


## Digital Connection

Step 1, ensure power is disconnected from the CD player and amplifier.

Step 2, using a digital coax interconnect cable, connect the digital coaxial output on the CD player to a digital coaxial input on your amplifier.

Alternatively, using an optical Toslink interconnect cable, connect the digital optical output on the CD player to a digital optical input on your amplifier.



## Top Tips

- Digital connections are recommended when using the CD350 with either the JBL SA550 or SA750 amplifiers.
- After making connections: switch the amplifier on with no input and reduce the volume to minimum. Select the input the corresponds to your connection, and then slowly increase the volume to a suitable listening level whilst playing a CD. This technique will avoid loud sounds or product damage in the event of incorrect connection.
- If you are unsure as to how your system should be connected, please contact your JBL dealer who will be happy to help you.

# Operation

## Power

The power switch on the rear panel switches the CD player on or off. When you have finished making connections, switch the player on.

### Standby

The Standby button on the front panel switches the CD player between **standby** and **on** (operating).

### Auto Standby

This CD player is designed to enter standby automatically after 20 minutes with no audio playing and no user interaction. This is to meet international power consumption regulations. This can be turned off in the menu. To use the menu, see page 11.

## Playing a CD

The JBL CD350 can play audio and data CDs. Please refer to supported media on page 11.

If not already selected, the CD tray can be selected for playback using the **right navigation key** on the remote control.

To open the CD tray, press the **▲** (eject) button on the front of the CD player, the drawer will open. Place your CD on the tray with the label facing up (shiny side down).

Now press the **▲** (eject) button on the front of the CD player to close the drawer, or press **▶/||** (play) to close the drawer and start playback.

**Note:** This CD player is only designed to accept compact discs. Ingress of other items (including but not limited to foodstuffs, beverages or appendages) is likely to cause damage or injury which will not be covered by the warranty.

## Playing from a USB storage device

The JBL CD350 can play music files stored on a USB flash drive. Please refer to supported media on page 12.

If not already selected, the USB input can be selected for playback using the **left navigation key** on the remote control.

Insert the USB storage device into the USB socket on the rear panel. Do not use a USB extension cable.

Now press **▶/||** (play) to start playback.

To change folder, use the up or down navigation keys on the remote control.

**Note:** The player will play files in a folder in chronological order.

## Menu

To access the menu, press the  (MENU) button on the remote control.





To navigate the menu, use the navigation buttons on the remote control.

### Menu Tree

Display	Select Display Brightness. Default is <b>Full</b> .
DAC Filter	Select a digital filter for the analog outputs. Default is <b>Slow</b> .
Eco Standby	When enabled, the CD player will enter standby after 20 minutes with no user interaction or playback. Default is <b>On</b> .
Disc Auto	Disables automatic playback start when a CD is inserted. Default is <b>On</b> .
Reset to Defaults	Restores factory settings.

## Supported Formats

### Disc formats

	Compact Discs (audio CDs)
	Write once, recordable Compact Discs (CD-R). Note: recordable discs must be finalized for the player to read them.
	Re-writable, recordable Compact Discs (CD-RW). Note: recordable discs must be finalized for the player to read them.
	CD-TEXT discs. These discs contain text information including track names, album and artist names.


## File Formats

File Type	Bitrates	Bit Depths	Sample Rates
AAC	8 – 320 kbps		32, 44.1 or 48 kHz
FLAC		16 or 24 bit	32, 44.1, 48, 88.2 or 96 kHz
MP3	32 – 320 kbps		32, 44.1 or 48 kHz
WAV		16 or 24 bit	32, 44.1, 48, 88.2 or 96 kHz
WMA	48 – 192 kbps		32, 44.1 or 48 kHz

### Notes:

- Files will be played from Disc or USB based on the date of creation. The first recorded will be the first to be played.
- When playing a file that has a variable bitrate, the track time displayed might not be accurate.
- DRM content (files with Digital Rights Management) cannot be played.
- The maximum folder depth is 9 folders.
- The maximum number of folders is 512.
- The maximum number of files is 65535.
- USB flash drives must be formatted using FAT16 or FAT32 file systems.

## Troubleshooting

Problem	Check the following
No sound	<p>Is the CD player correctly plugged in and switched on?</p> <p>Is the CD player connected correctly to your amplifier?</p> <p>Is your amplifier on, with the correct input selected, and not muted?</p>
Inserted Disc does not play	<p>Is the disc scratched or dirty?</p> <p>Is the disc inserted the wrong way up? The disc should be inserted shiny side down.</p> <p>Is the disc a supported type?</p> <p>Is the CD player in USB mode?</p>
Unable to play music files	<p>Is the USB flash drive connected properly?</p> <p>Are the files you are trying to play supported by this CD player?</p> <p>If you are trying to play files from a disc, has the disc been finalized after recording?</p>
Sound cuts-out unexpectedly	<p>Is the disc scratched or dirty?</p> <p>Playback can be interrupted by vibration or impact to the CD player. The CD player should not be subject to movement or vibration when playing.</p>
The CD player does not respond to the remote control	<p>Are there fresh batteries in the remote control?</p> <p>Are you pointing the remote control towards the CD player display without obstruction?</p>
The front panel display is blank	<p>Is the CD player correctly plugged in and switched on?</p> <p>Is the CD player in standby?</p> <p>Is the display dimmed to "Off"?</p> <p>Press the  button on the remote control.</p>

## Specifications

Outputs	
DAC	PCM1796
Frequency response	20Hz - 20kHz ± 0.05dB
Nominal output level	2.0 ± 0.3V
Total harmonic distortion + Noise	0.007%
Signal/Noise ratio (A-wtd)	105dB
General	
Mains voltage	100–240V, 50–60Hz
Maximum power consumption	12W
Dimensions in mm (Including feet, control knob and connectors)	448 W x 89 H x 290 D
Weight (net)	5.8 kg
Weight (gross)	7.5 kg